

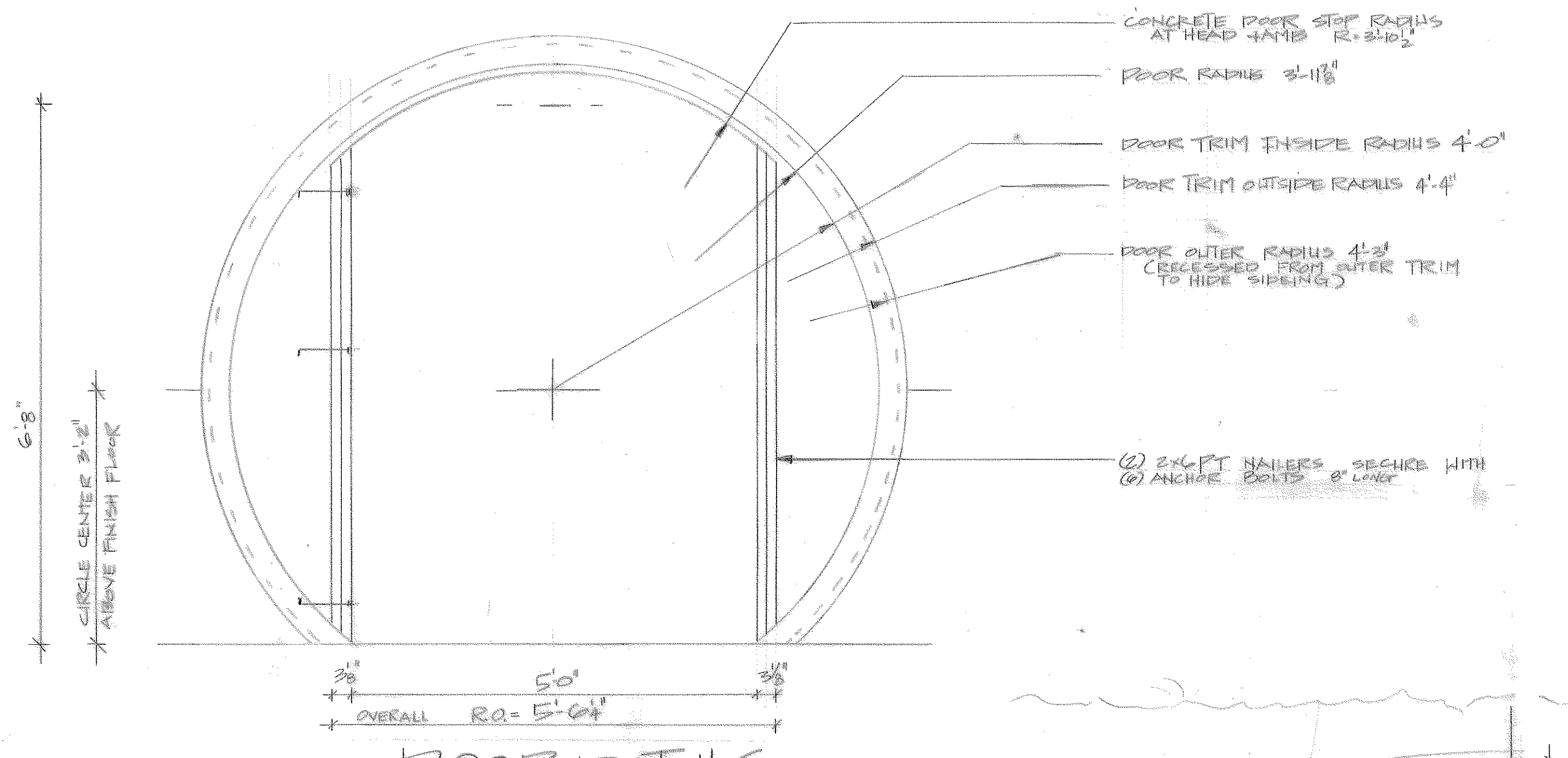
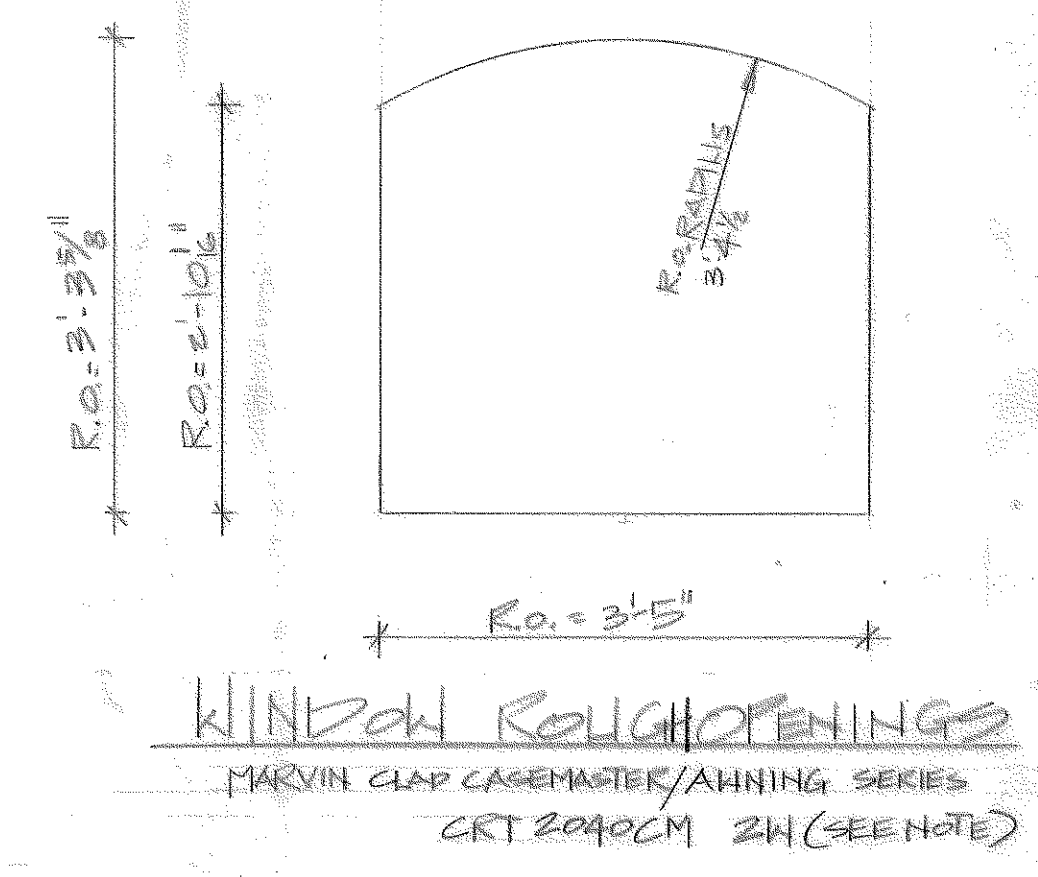
**NOTES:**

1. INTERIOR AREA 14'x20' = 280sqft
2. STRUCTURE IS MADE WITH 3000PSI CONCRETE
3. CONCRETE COVER FOR REBAR FOOTINGS AND CONCRETE EXPOSED TO EARTH 3" MIN. INTERIOR OF SLAB 3" WALLS AND TOP BARS IN SLAB 1 1/2"
4. ALL GRAVEL EXPOSED TO EARTH TO BE COVERED WITH GEOTEXTILE FILTER FABRIC
5. FOOTING DRAINS DRAIN TO DAYLIGHT
6. FOOTINGS ARE PROTECTED BY 2" OF BLUE HIGH DENSITY STYROFOAM AT HEAD 4" FROM EDGE OF FOOTING AS SHOWN.
7. ROOF OF STRUCTURE WILL BE COVERED WITH A MIN. OF 12" OF EARTH
8. RAIN VENT WILL GO THROUGH ROOF
9. (C) ADDITIONAL #5 REBAR WILL SPAN ANY OPENING 24" PASSED ON EITHER SIDE

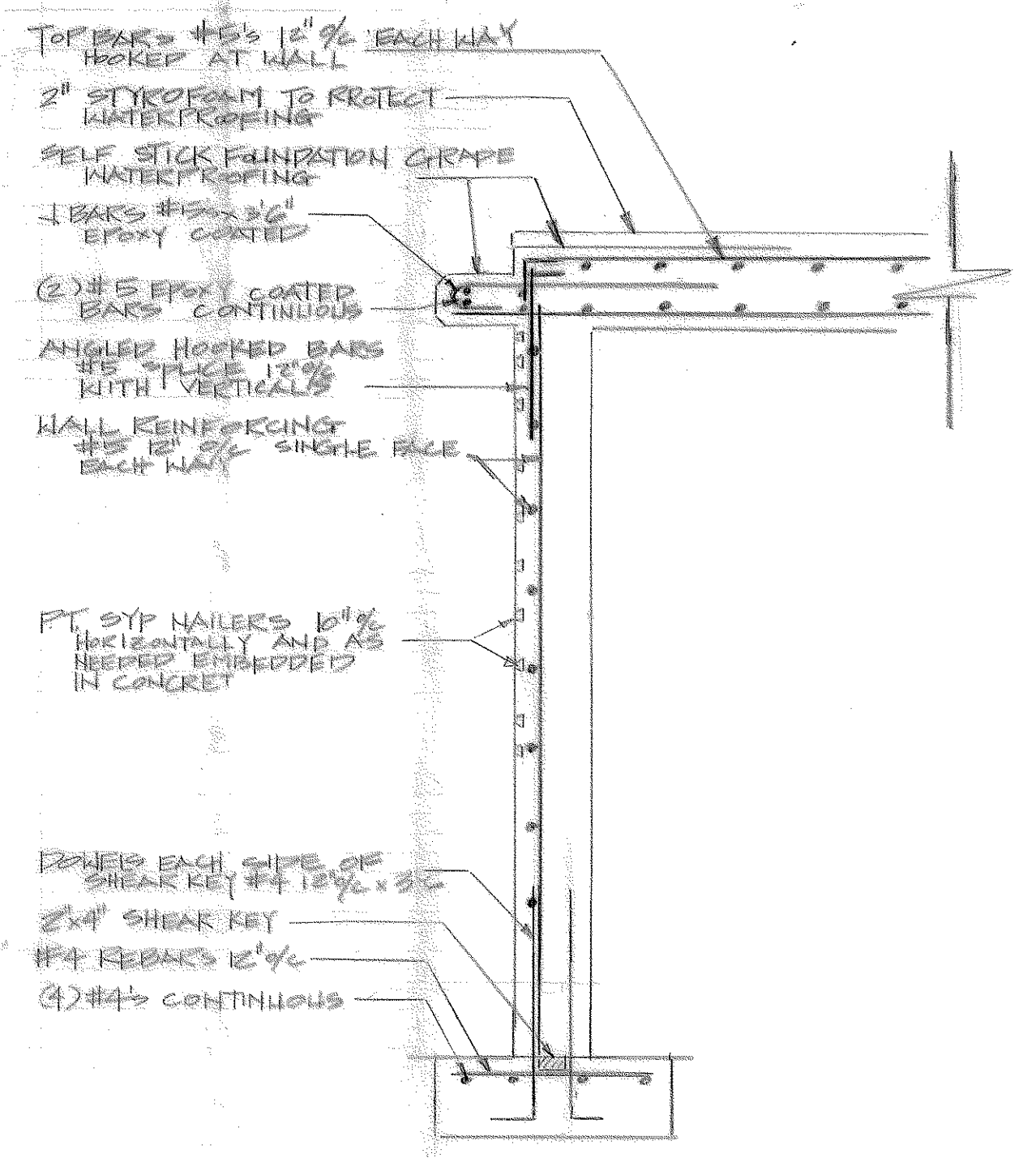
**WINDOW NOTE:**

ALL MARVIN ROUGH OPENING DIMENSIONS MUST BE ADJUSTED FOR MILLERS IN CONCRETE STRUCTURE

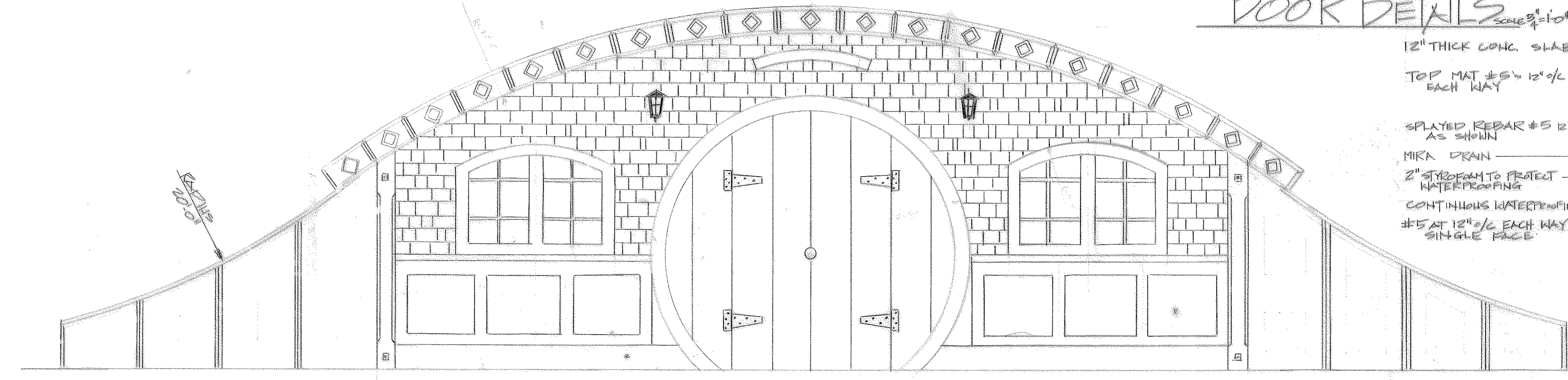
MARVIN R.O.	PLUS ADJUSTMENT	RESULTING NET R.O.
3'-3 3/8"	3/4"	3'-4 1/8"
2'-0 1/2"	3/4"	2'-1 1/8"
3'-5"	3/4"	3'-5 3/4"
3'-4 1/2"	1/8"	3'-4 3/4"



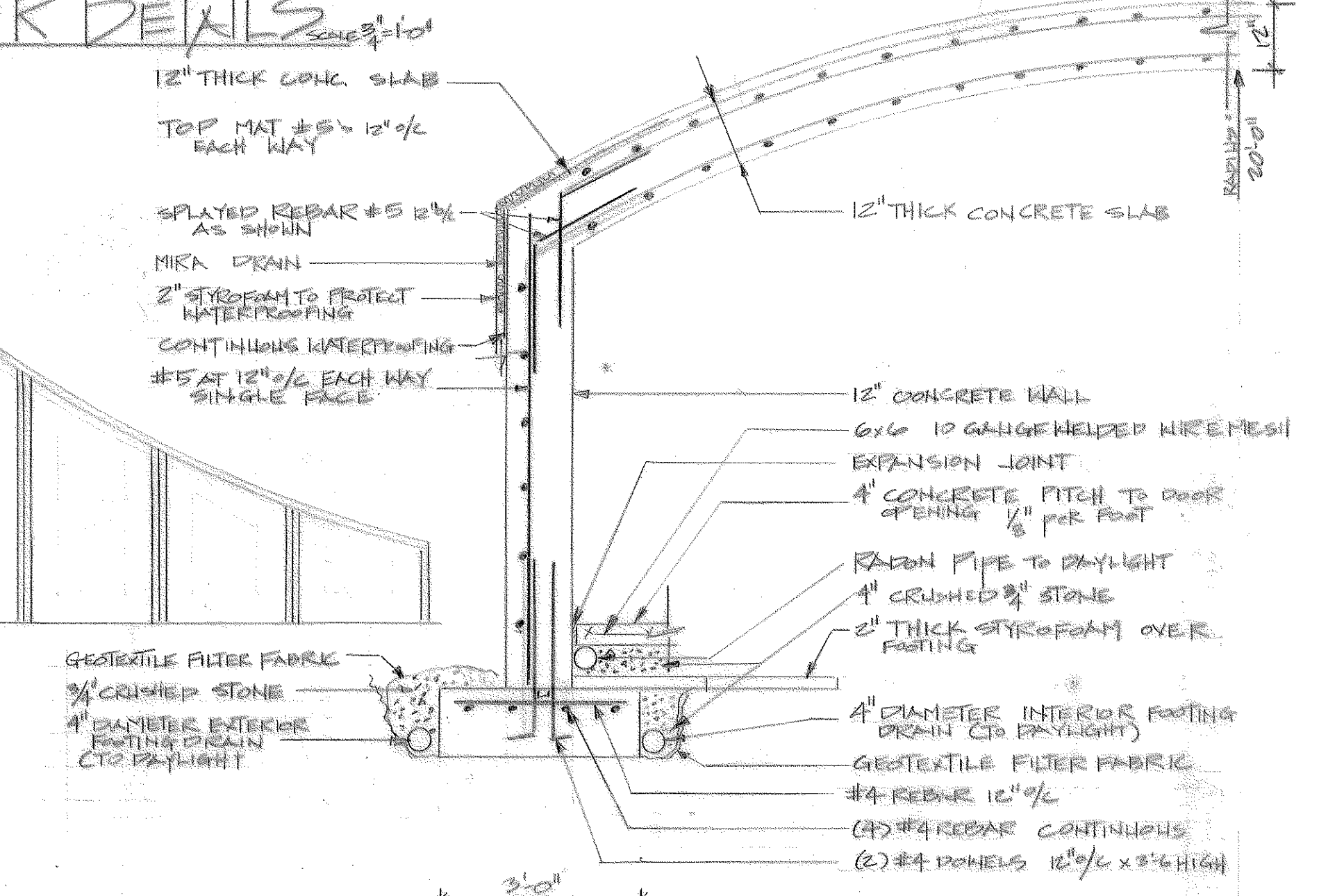
**DOOR DETAILS**



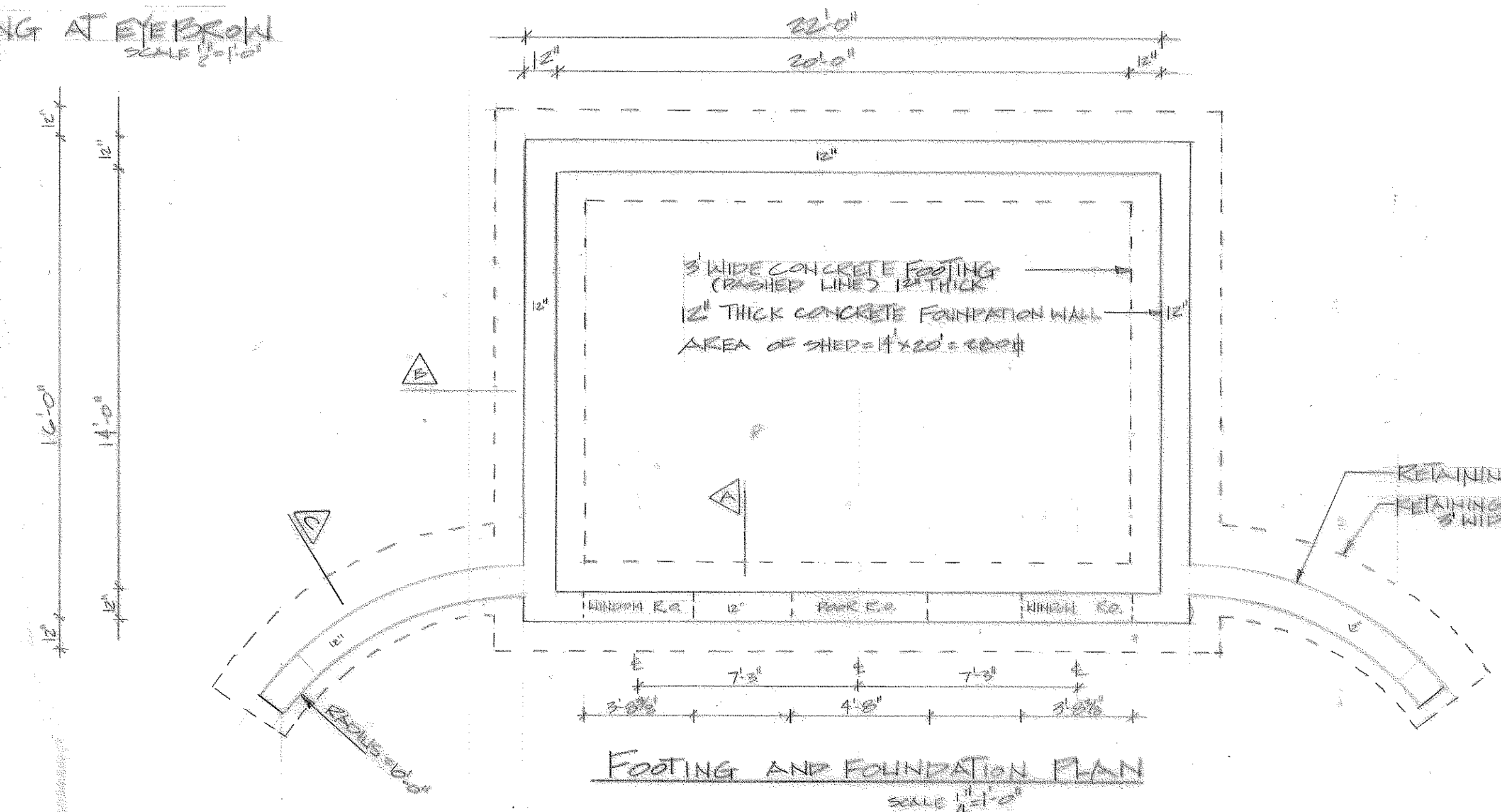
**SECTION A**  
REINFORCING AT EYEBROW  
SCALE 1/2"=1'-0"



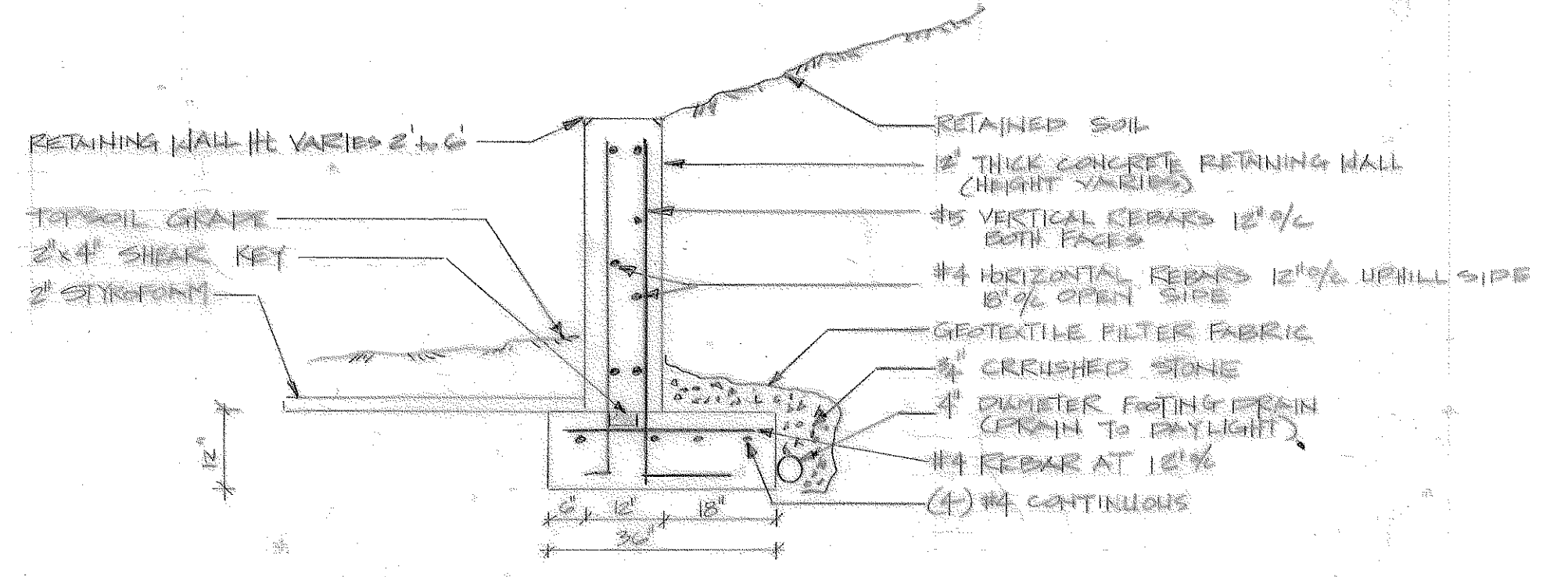
**FRONT ELEVATION HOBBIT SHED**



**SECTION B WALL REINFORCING**  
SCALE 1/2"=1'-0"



**FOOTING AND FOUNDATION PLAN**  
SCALE 1/4"=1'-0"



**SECTION C RETAINING WALL**  
SCALE 1/2"=1'-0"

**HOBBIT SHED**

DATE 9-11-00

**HOBBIT SHED**

DESIGNER: JIM JODI

LOCATION:

DESIGNED BY: JIM

DESIGNED BY: JIM